



INTERIOR ELEMENTS

WITH CAST-IN TEXTURES AND FINISHES

FORMGLAS INC.

Founded in 1961, Formglas Inc. is the world's leading manufacturer of Glassfiber Reinforced Gypsum cast products for interior use.

With over 300 engineering and production employees in Toronto and Kuala Lumpur, even the largest projects can be executed successfully. A factory sales force can assist in finding cost effective solutions and a world wide agent network including an engineering office in Tokyo, ensures expert advice anywhere.

Tested in many countries, Formglas products meet the most stringent fire codes. In addition to being incombustible and non-toxic, our materials are light weight and relatively easy to install with regular tools.

In good times or bad, Formglas' strong financial and market position has afforded the company never to reduce it's R&D and to continuously improve its products. This brochure shows some of the textures and finishes developed over the last 38 years.

When you specify a Formglas product, you incorporate the very best.

GENERAL INFORMATION

- Most shapes and textures can be manufactured in either G.R.G., QuarryCast® or MetalCast®.
- All Formglas parts are custom made and never stocked.
- A standard price list is not available and all items are factory quoted based on quantities, types, etc.
- Formglas' R & D Department can custom match most colours and textures.
- G.R.G. is field painted or stained. QuarryCast® and MetalCast® have 'cast-in' finishes that cannot be applied after.
- Although we do not install our products, we will be glad to offer technical assistance or help to locate an installer.



Formglas Inc.

20 Toro Road, Toronto, ON CANADA M3J 2A7
Tel: (416) 635-8030 Fax: (416) 635-6588
Web Site: <http://www.formglas.com>

Formglas (SEA) Sdn Bhd.

Lot 590, Persiaran Raja Lumu Pandamaran Ind. Area,
42000 Port Klang, Selangor Darul Ehsan, MALAYSIA
Tel: (603) 368-1299 Fax: (603) 367-7795

Formglas Japan Inc.

1-10-4 Shinjuku Shinjuku-Ku, Tokyo 160, JAPAN
Tel: (03) 3225-8397 Fax: (03) 3225-9153

FORMGLAS PRODUCTS

- **Fire and Smoke:**
All Formglas products have 0 flame, very low smoke ratings and are approved for unrestricted use across the globe.
- **Thickness:**
1/8" to 5/16" (3-8 mm) with reinforced edges up to 1" (25 mm) thick.
- **Weight:** 1 1/2 to 3 lbs. /sq. ft. (8 to 15 kg. / sq. m.)

PRODUCT TYPES: (FOR INTERIOR USE ONLY)

G.R.G.

Glassfiber Reinforced Gypsum is a white 'thin cast' alpa gypsum that is field finished. Where once traditional 'plaster castings' were used, G.R.G. is now specified because of its lightweight, superior strength and ease of installation.

- Installed by the Drywall Trade - Division #9.

QuarryCast®

A gypsum based 'molded stone', reinforced with glassfibers, and coloured throughout. With the appearance of lime / sand stone QuarryCast® can be molded into any shape and the 5/16" (8mm) thick 'Veneer' panels can be adhered to drywall or plywood.

- Installed by carpenters / millworkers - Division #6.

MetalCast®

A factory finished 'cold cast' metal matrix backed with glassfiber reinforced gypsum. Although not inexpensive, it is usually more economical than conventional metal castings.

- Installed by carpenters / millworkers - Division #6.

Detailed information on pages 8 & 9.

ATLANTIS HOTEL & CASINO, BAHAMAS. Design: Wilson & Assoc.
Formglas G.R.G., MetalCast® and QuarryCast® were used extensively
on walls, ceilings, columns, door surrounds and arches.



QuarryCast®

Finishes are cast-in and cannot be field applied.



CANYON CLAY

MOGUL MAUVE

SEATTLE SAND

AQUA

MOHAVE

GREY 004-A

CORDOVAN

KYOTO COFFEE

T.K. GREEN

PRINCETON PINK

GALVESTON GREY

BOISE BUFF

QuarryCast® STANDARD TEXTURE & COLOURS. VARIATIONS TO THESE CAN BE MADE ON A CUSTOM BASIS.

PANEL

Texture: 'MOTTLED'; Colour: 'GALVESTON GREY'



1"
25



ELEVATOR LOBBY, SAN JOSE, CA.

The 'Veneer' joints are caulked, and metal feature strips are incorporated into the mouldings and door surround.

'VENEER'- Top panel with 'MACHINED' pattern.

Texture and Colour: 'B.C.M.-1'.

Standard beveled edges create 'V' joints between panels.

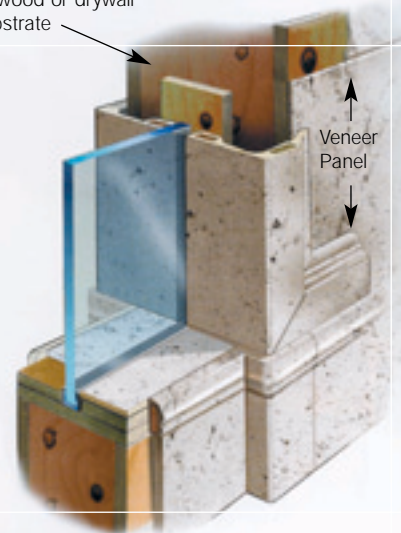


Actual colours may vary from photographs.
QuarryCast® is for interior use only.



MARKS & SPENCER STORE FRONT.
Mouldings surrounding inset 'Veneer' panels, cornice and baseboard.

Plywood or drywall substrate



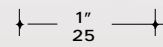
MARKS & SPENCER STORE FRONT.
Assembly of 5/16" (8mm) thick 'Veneer' panels, mouldings and baseboard.



'VENEER' PANELS WITH DIAMOND INSERTS

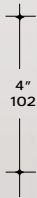
'VENEER' PANEL

Texture: 'STANDARD'. Colour: 'SEATTLE SAND'. All 'Veneer' panels have beveled edges as shown at top.



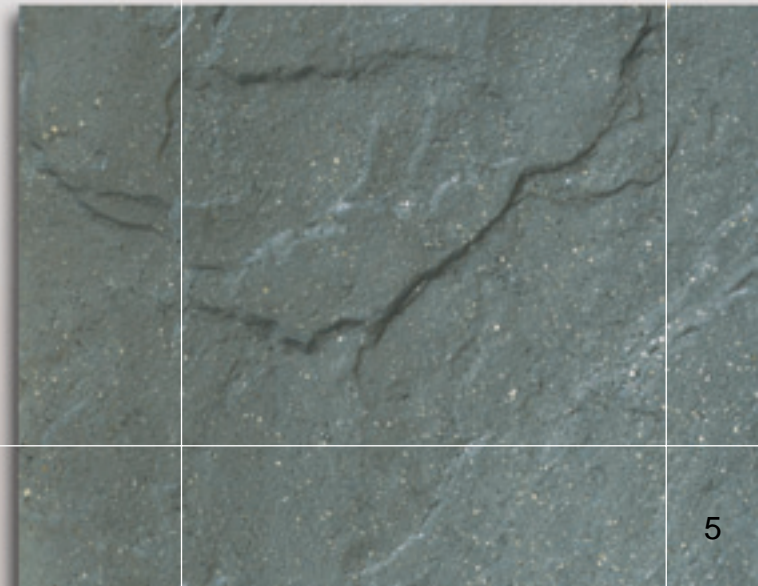
ATLANTIS, BAHAMAS.

QuarryCast® bracket, arch.
Wall panels with 'SHELL' pattern.



'VENEER' PANEL

Texture: 'SLATE'; Colour: 'T.K. GREEN'.

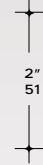




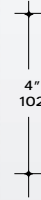
CORINTHIAN COLUMN with MetalCast® ring.
QuarryCast® Texture and Colour: 'T.C.P.R.-3'.



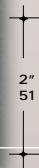
'VENEER' PANEL
Texture and Colour: 'F'.



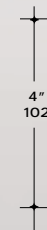
'RANDOM SPLIT STONE' PANEL
Colour: 'KYOTO COFFEE'.



'VENEER' PANEL
Texture: 'H.I.' (High Impact) ; Colour: 'BOISE BUFF'.



CLOSED SCREEN
Texture and Colour: 'F.M.B.-S6'.



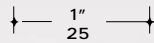
Actual colours may vary from photographs.
QuarryCast® is for interior use only.



ECATERINA RESTAURANT, TOKYO.
Straight and curved 'Veneer' panels.



BACK-LIT SIGN
Plexiglass behind 'Save-out' letters (min. 6" - 152mm high).
Letters are molded-they cannot be routed.

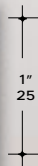


QUARRYCAST PANEL
Texture and Colour: 'T.C.P.R.-1R'.
with MetalCast band.

'VENEER' PANEL
Texture and Colour: 'T.C.P.R.-3'.
All 'Veneer' panels have beveled edges, as shown at top.

'VENEER' PANELS in QuarryCast: 'ST.CA.INT.',
and MetalCast pilaster.
See page 10 for additional information.

'VENEER' PANEL
Texture and Colour: 'F.M.B.-S6'.



QuarryCast®

- QuarryCast® is a gypsum based 'molded stone', reinforced with glassfibers.
- Coloured throughout and finished with a clear sealer to improve its resistance to dirt / staining.
- Most stone / marble colours can be matched but a 'polished' look is not possible.
- As in natural stone, colour and texture variations within and between pieces will occur.
- Thickness: 'Veneer' panels - 5/16" (8mm).
Custom Parts - 1/4" (6mm) shell with +/- 1" (25mm) edges.
- Maximum Size: 'Veneer' Panels 48' x 36' (1220 x 900mm.).
Custom Parts: 32 sq. ft. (3 sq.m.).
- Weight: 2 1/4 - 3 lbs /sq. ft. (11 - 15 kg. / sq. m.).
- It can be used in high humidity areas but should not be exposed to rain or used on floors.
- Flame - 0; Smoke - 0.
- Installed by carpenters / millworkers - Division #6.



NEVADA SUPREME COURTHOUSE, CARSON CITY, NEVADA.

Eissmann Pence Architects.

Hexagonal columns, 'Veneer' panels and signs with recessed lettering.



ATLANTIS, BAHAMAS.

Design: Wilson & Assoc.

QuarryCast® door surround and columns
with MetalCast® rings, bases and capitals.

DESIGN ① CATALOG (see backcover)

Because of the many material types and finishes, Formglas parts are made to order only and are never stocked.

The majority of our products are made for specific projects using custom molds and tooling.

However, our 'Design ① Catalog' shows existing molds from which parts can be made to help reduce costs and shorten delivery times.



BOMBAY COMPANY STORE FRONT

Design: A & E Designs.
MetalCast® pilasters, grill and trim.

MetalCast®

- MetalCast® is a 'cold cast' metal powder matrix backed with glassfiber reinforced gypsum.
- A lacquer coat prevents surface oxidation and improves its resistance to dirt and staining.
- It has a buffed / burnished appearance and it is not available in a bright polished look.
- **Thickness:** 'Veneer' panels - 1/4" (6mm).
Custom Parts - 1/4" (6mm) with +/- 1" (25mm) edges.
- **Maximum Size:** 'Veneer' Panels 36" x 24" (900 x 600mm)
Custom Parts: 20 sq. ft. (1.8 sq.m.).
- **Weight:** 2 1/2 - 3 lbs /sq. ft. (12 - 15 kg. / sq. m.).
- Filled screwholes are always visible. (see pages 11 & 15).
- Not recommended for:
 - High humidity environments (bathrooms, etc.).
 - Surfaces exposed to traffic / damage (baseboards etc.)
 - Areas exposed to rain.
- Flame - 0; Smoke - 6.
- Installed by carpenters / millworkers - Division #6.

ACADIAN COURT RESTAURANT, TORONTO

G.R.G. columns, mouldings and lightcovers.

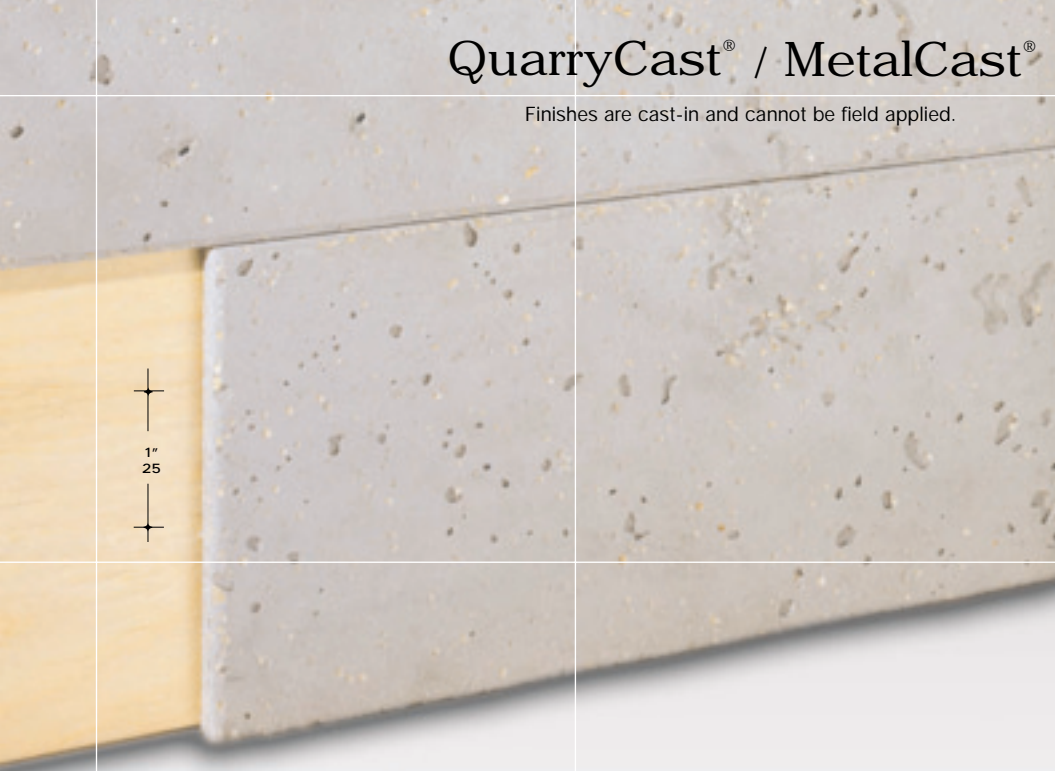


FORMGLAS G.R.G.

- Glassfiber reinforced gypsum is a high strength, 'thin cast' alpha gypsum that replaces traditional 'plaster castings'.
- It is always field finished (the paints and stains in this brochure are only to show the possibilities.).
- High gloss finishes are not recommended.
- Joints can be taped like drywall.
- **Thickness:** 1/8" - 3/16" (3-5mm) shell with +/- 1" (25mm) reinforced edges.
- **Weight:** 1 1/2 - 2 1/2 lbs /sq. ft. (8 - 12 kg. / sq. m.).
- Ceiling elements are usually suspended while other parts are face fastened with screws.
- It can be used in high humidity areas but should not be exposed to rain.
- Flame - 0; Smoke - 0.
- Installed by drywall trade - Division #9.

QuarryCast® / MetalCast®

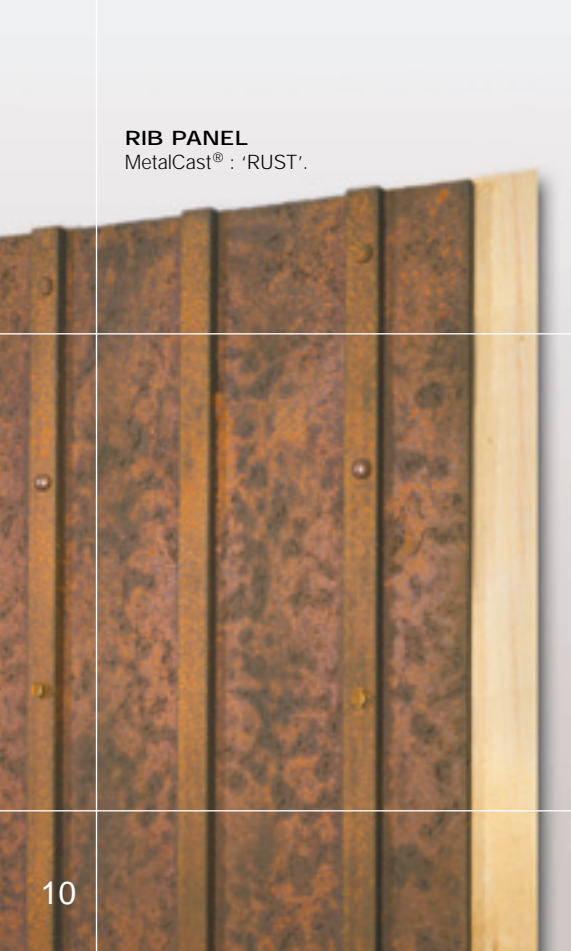
Finishes are cast-in and cannot be field applied.



'VENEER' PANELS - 'Unfinished Concrete' look.
QuarryCast® : 'ST. CA. INT.'
See page 24 for sizes etc.



PILASTER - 'Distressed Cast Iron' look.
MetalCast® : 'F.21- BLACK'.

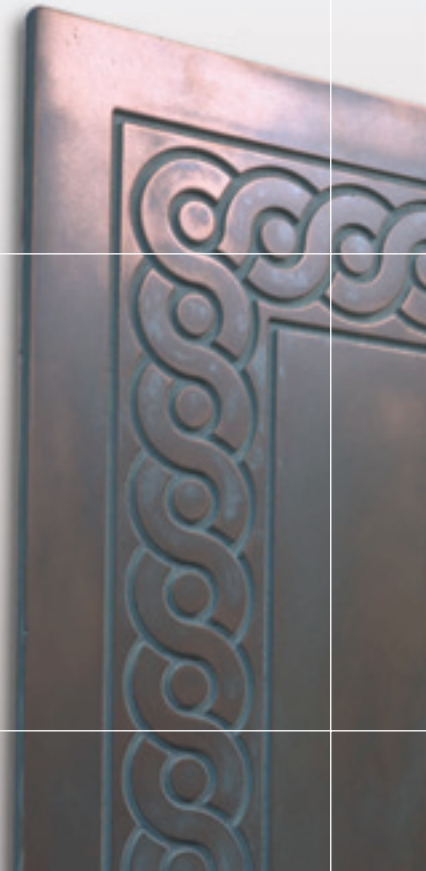


RIB PANEL
MetalCast® : 'RUST'.



ATLANTIS, BAHAMAS - ELEVATOR CABS
MetalCast® : 'COPPER-GREEN PATINA' panels.

PANEL
MetalCast® : 'COPPER-GREEN PATINA'.





MOULDING
Textured, smooth, polished and mat 'BRONZE'.
Note the built-in plywood reinforcement.

1 3/4" / 44

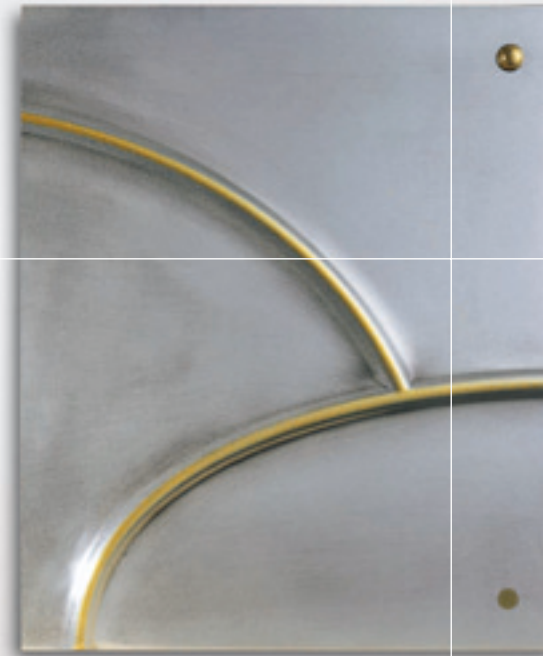
9" / 228



CLOSED GRILL
In 'BR.CO.75'

10" / 253

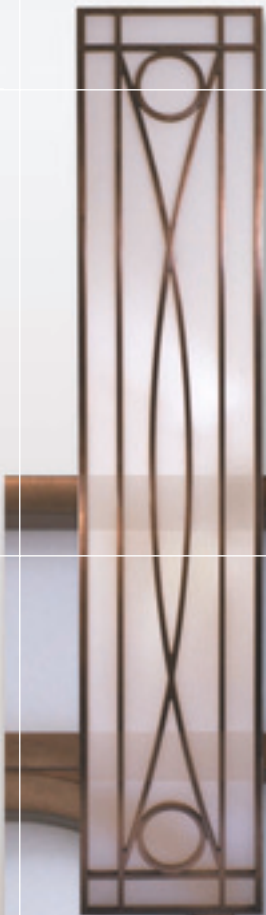
3" / 76



PANEL

'NICKEL - SILVER' with brass accents.
The screwholes can be filled, but they will be visible (r.h. bottom), or they can be covered with MetalCast® buttons (r.h. top).
Note the buffed/burnished look.
Bright polished finishes are not available.

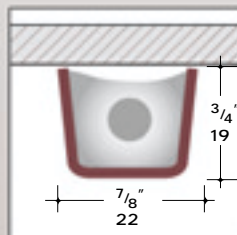
17" / 430



OPEN GRILL - 'COPPER'
With plexiglass back-up.

7/8" / 22

MIN. SECTION OF GRILL



Filled screwholes are always visible.
Actual colours may vary from photographs.
MetalCast® is for interior use only.

MetalCast®

Finishes are cast-in and cannot be field applied.



1"
25

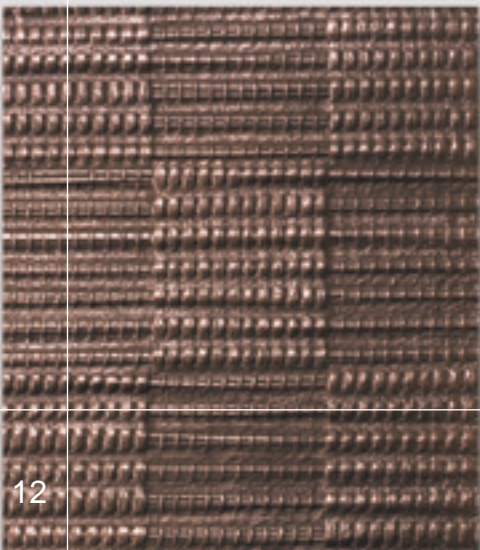
WEAVE #7
'BRASS'



2"
51

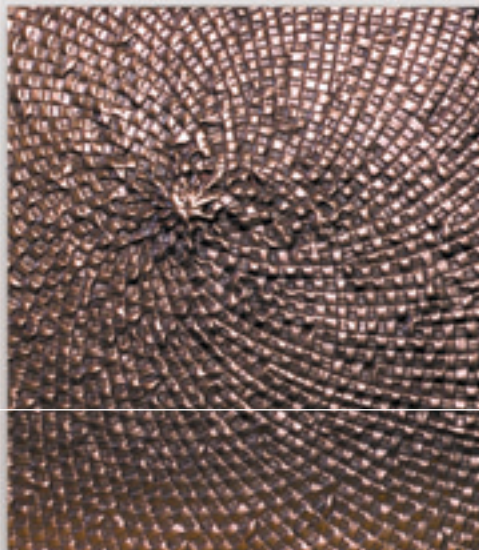
MOSAIC PANEL
'COPPER-GREEN PATINA'

WEAVE #3
'COPPER'

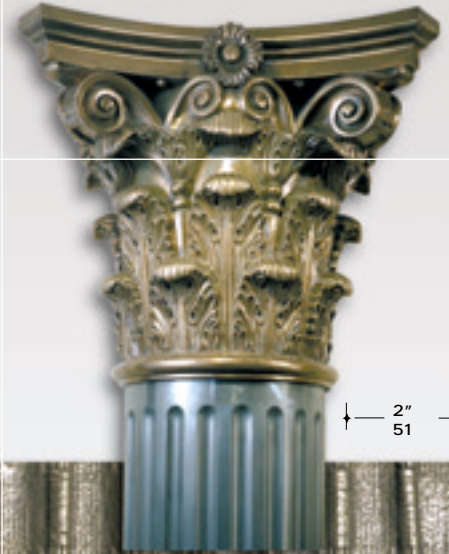


2"
51

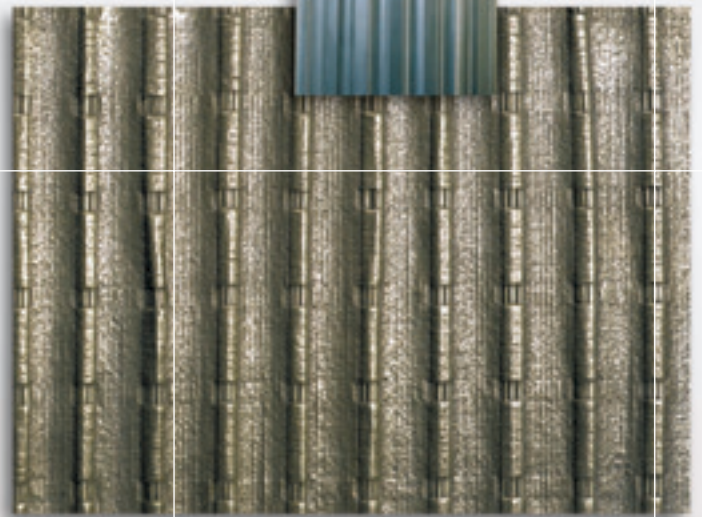
WEAVE #6
'COPPER'



CAPITAL - 'BRASS'
SHAFT - 'NICKEL SILVER'



2"
51



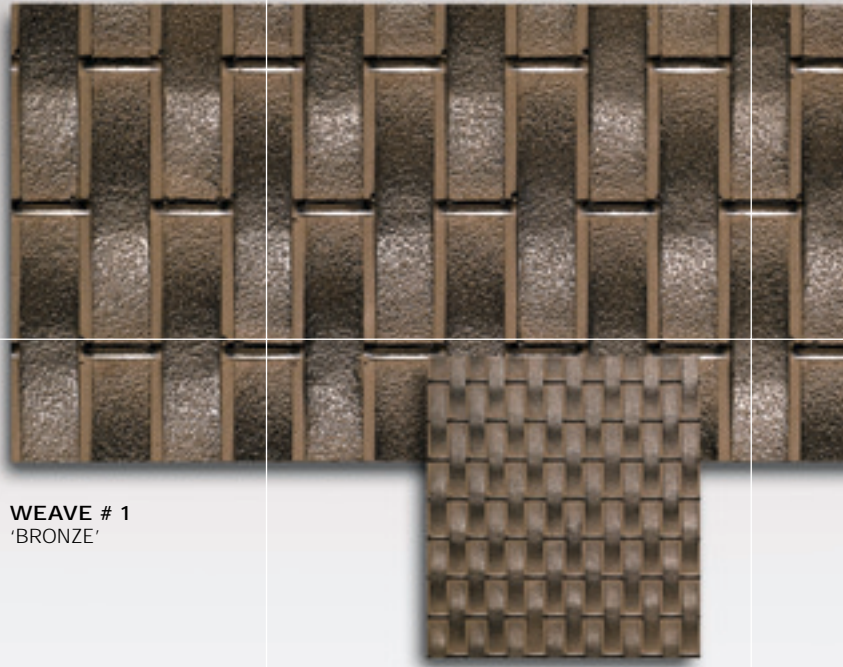
WEAVE #4
'BRASS'

Filled screwholes are always visible.
Actual colours may vary from photographs.
MetalCast® is for interior use only.



ATLANTIS, BAHAMAS.
'BRASS' ceiling moulding.

1" / 25



WEAVE # 1
'BRONZE'

WEAVE
'BRONZE'



1 1/2" / 38

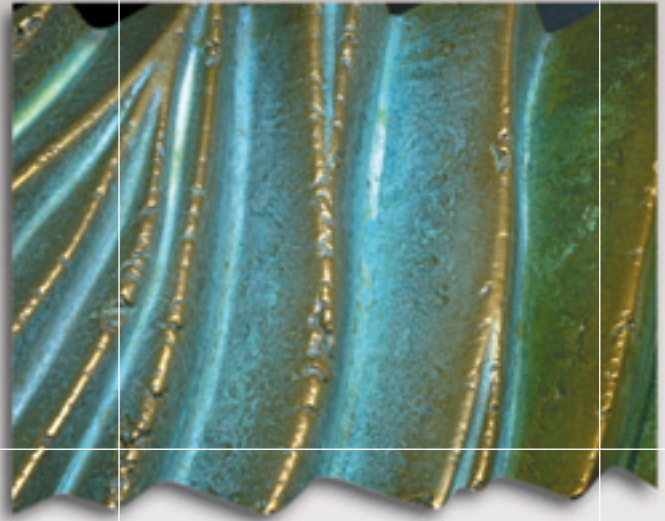


GANTOS. - Design: Gundersen & Assoc.
'NICKEL - SILVER' display unit and store front.
'Save-out' sign is backlit through plexiglass.
See P. 7 for 'Save-out'/Plexiglass back-up method.

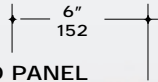




DOMINION PUBLIC BUILDING, TORONTO. Design: Strasman.
Door surround in 'BRONZE'.
Door frames and hardware are actual metal-never MetalCast®.



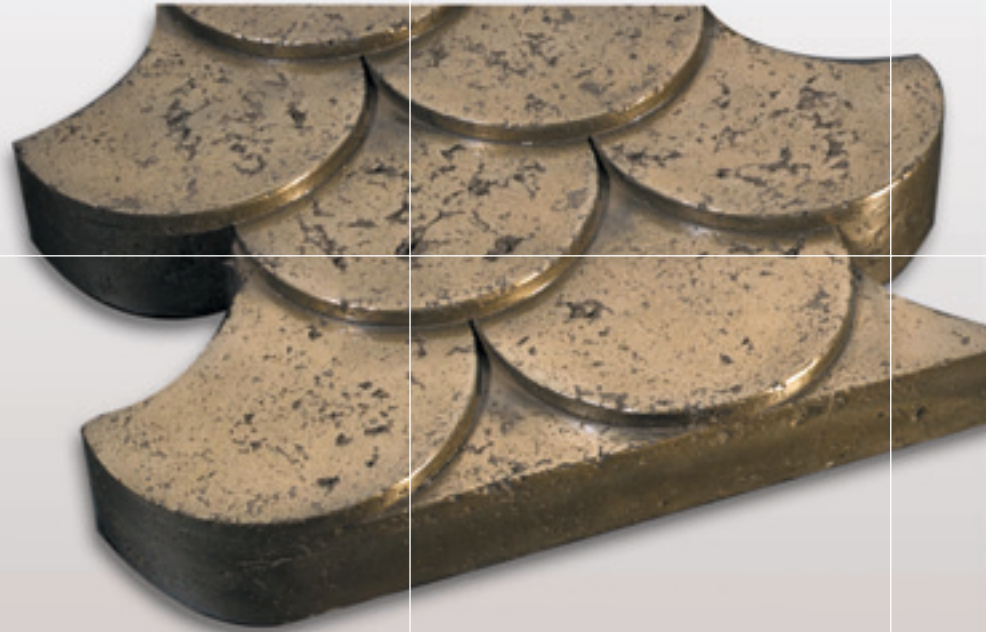
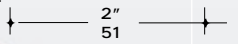
PANEL - 'DRAPED FABRIC' look.
'BRASS-GREEN PATINA - A'.



RIBBED PANEL
'RUST'



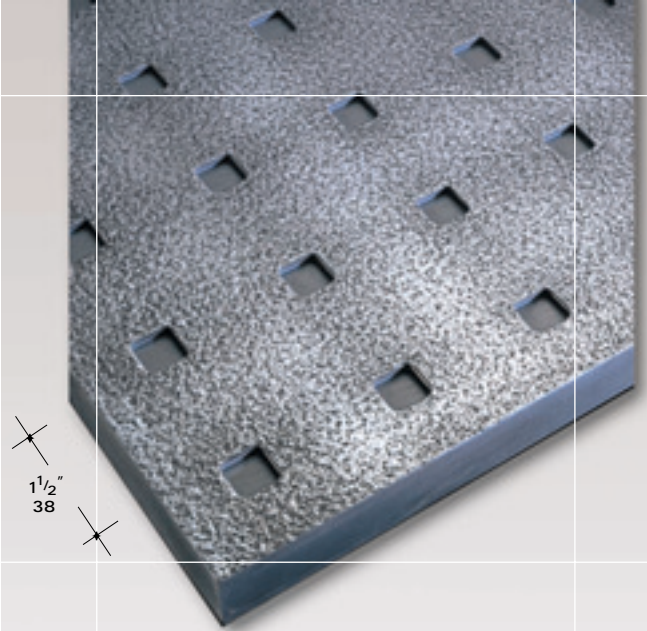
METALCAST 'FISH SCALES' - 'QUARRYPAST' texture.
'BRONZE'



Filled screwholes are always visible.
Actual colours may vary from photographs.
MetalCast® is for interior use only.

MetalCast®

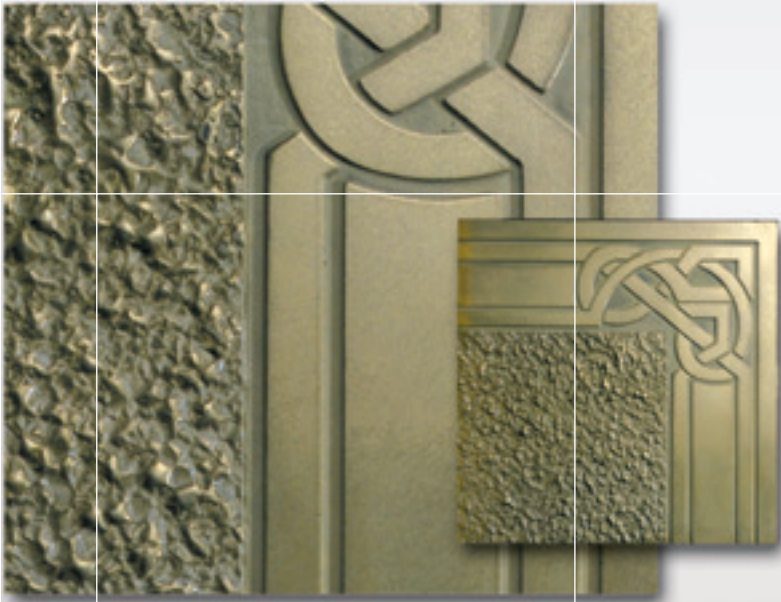
Finishes are cast-in and cannot be field applied.



'RECESSED SQUARE PATTERN' PANEL
'NICKEL-SILVER' with '40' texture.

PANEL

With 'STANDARD' (smooth) and 'BUSH-HAMMERED' texture.
'BRASS'



1" / 25



PANEL

'BRONZE' with 'BRASS' accents.

3 1/2" (90mm) MOULDING

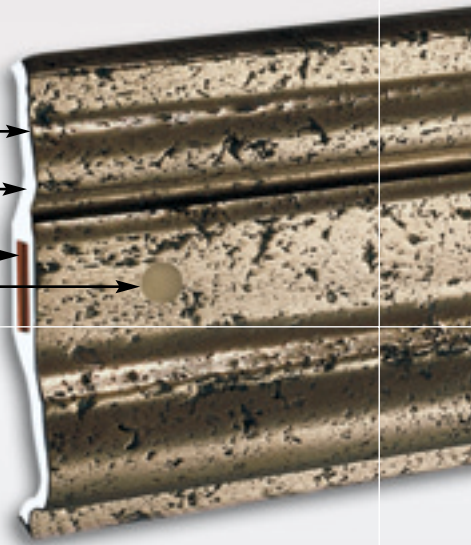
'BRONZE' with 'QUARRRYCAST' texture.

1/16" (1.5mm) thick 'BRONZE' face

G.R.G. back-up

Plywood reinforcement

Visible filled screwhole



CEILING COFFER

'NICKEL-SILVER' with 'BRASS' accents.

SHERATON HOTEL, HONG KONG.

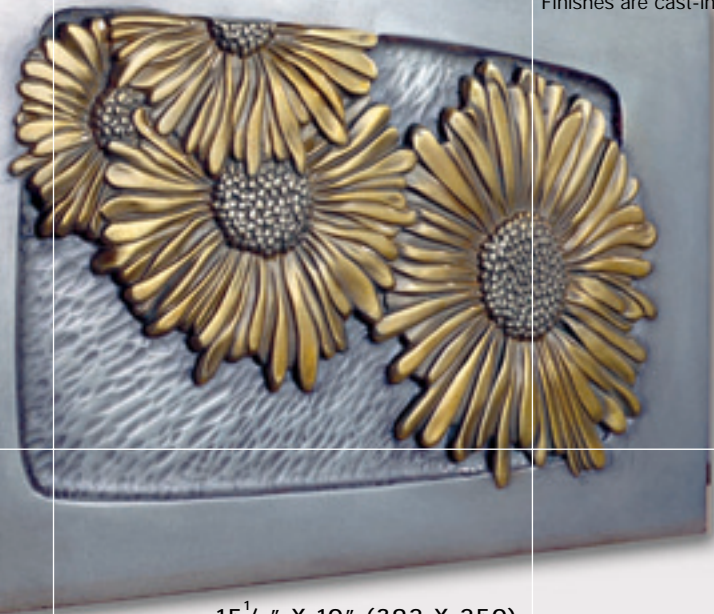
'BRONZE' wall panels.
Doors and frames are not MetalCast®.



1 1/2" / 38

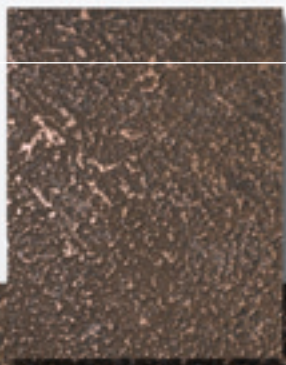
MetalCast®

Finishes are cast-in and cannot be field applied.

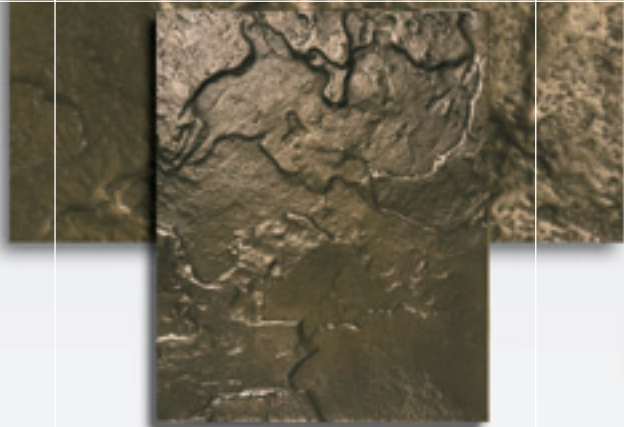
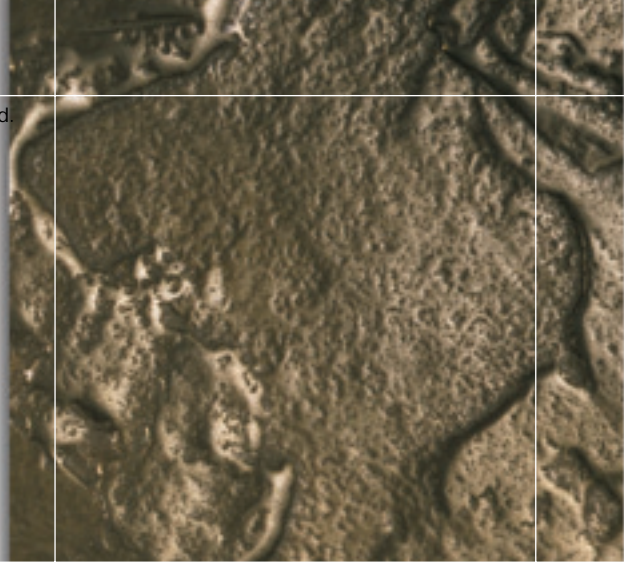


15 1/2" X 10" (392 X 250)
'NICKEL-SILVER' with 'BRASS' highlights.
In the style of Edgar Brandt.

PANEL 'BUSH-HAMMERED' texture
'COPPER'.

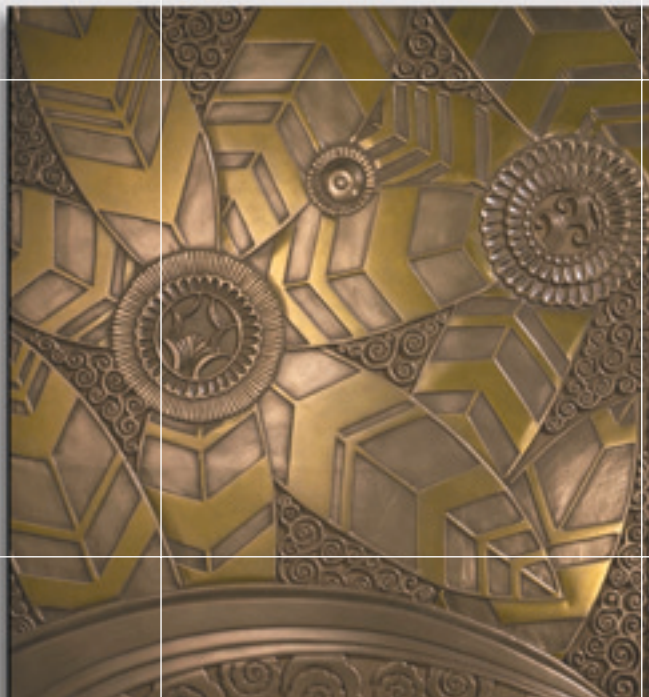


2"
51



SLATE
'BRONZE'

24" X 22" (606 X 556) PANEL
'BRONZE' with 'BRASS' highlights.
In the style of Edgar Brandt.





TRADITIONAL



CONTEMPORARY



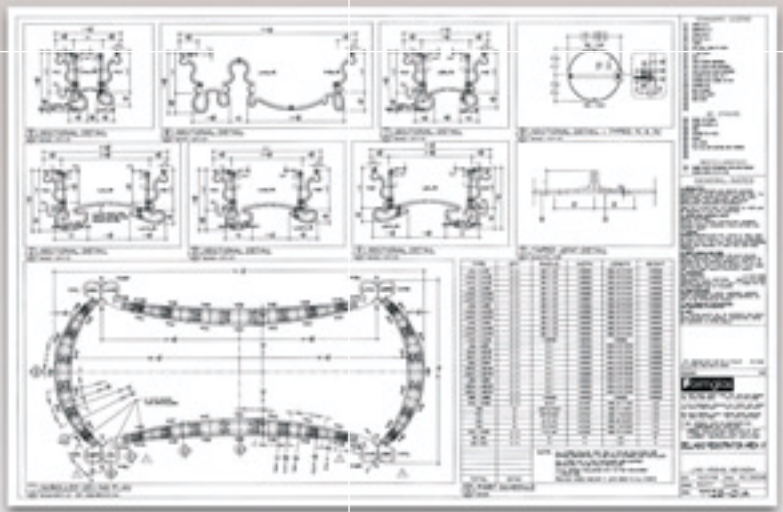
BALCONY COVERS, LIGHT COVES & VAULTED CEILINGS - JIN MAO BUILDING, SHANGHAI. DESIGN: S.O.M.



Although we do not install our product we can offer technical assistance, or help to locate an installer.



A section through a 6" (150mm) molding shows the built-in plywood reinforcement and the thin but strong construction.



Shop drawings are submitted for approval prior to manufacturing all orders.



'Simulated Steel' elements
in lightweight G.R.G.

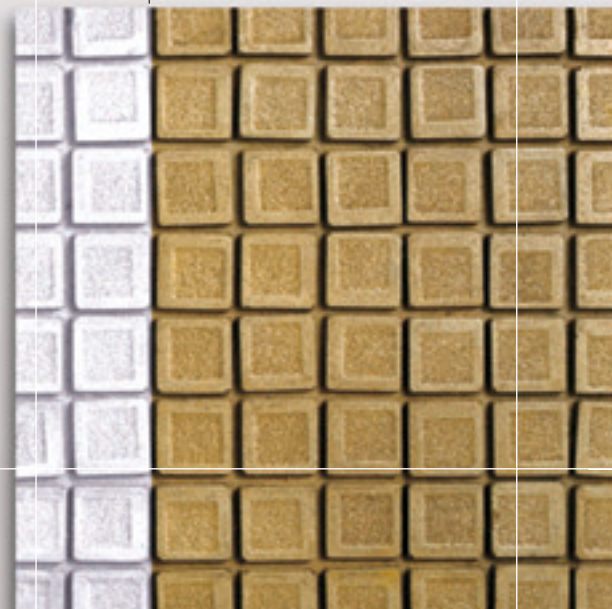
For these and other Formglas shapes
see 'DESIGN ① CATALOGUE'.



'MUSE HEAD'
Sculpted and cast by Formglas
for Paris Casino, Las Vegas.

Nat. G.R.G. ← → Painted **MOSAIC PANEL**

1"
25



G.R.G.

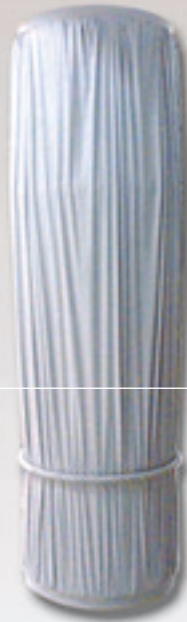
Field painted or stained

G.R.G. CEILING PANEL- 'DRAPED FABRIC'
Gold paint (not MetalCast®) and coloured wash.



1"
25

WEAVE #9 Painted → ← Nat. G.R.G.



24"
610

G.R.G. COLUMN
'DRAPED FABRIC'



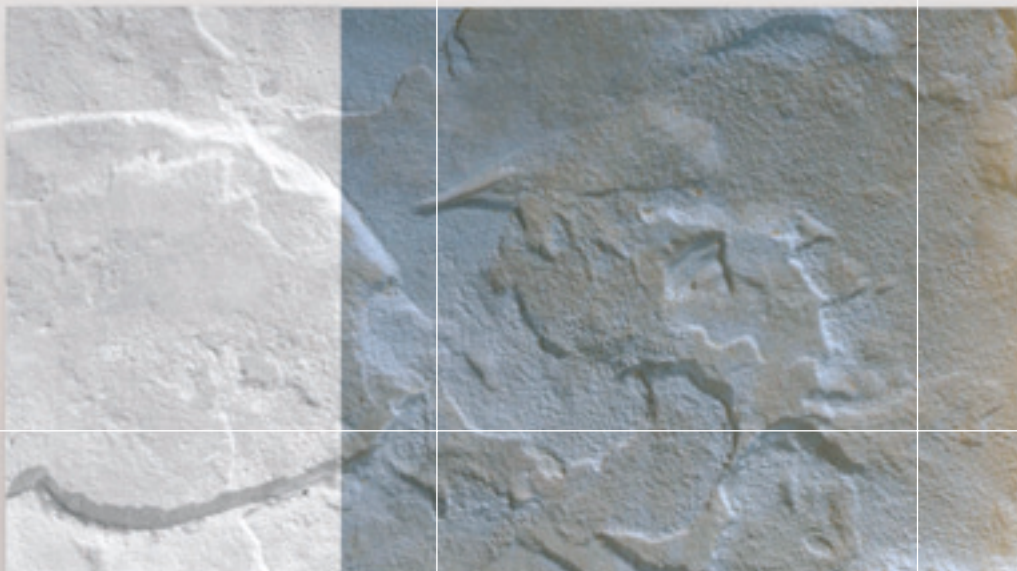
1"
25



1"
25

WEAVE #10

SLATE Nat. G.R.G. → ← Painted



2"
51

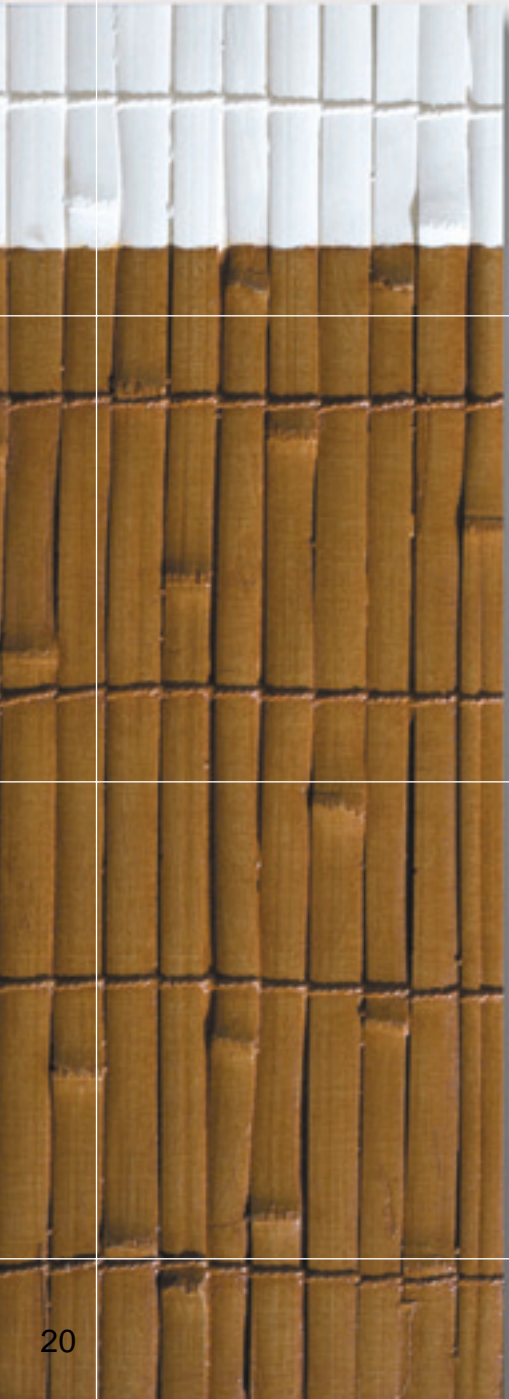
These finishes show the possibilities
but paints are field applied.
G.R.G. is for interior use only.

G.R.G.

Field painted or stained

2" / 51

PANEL
'FLAT BAMBOO' texture.



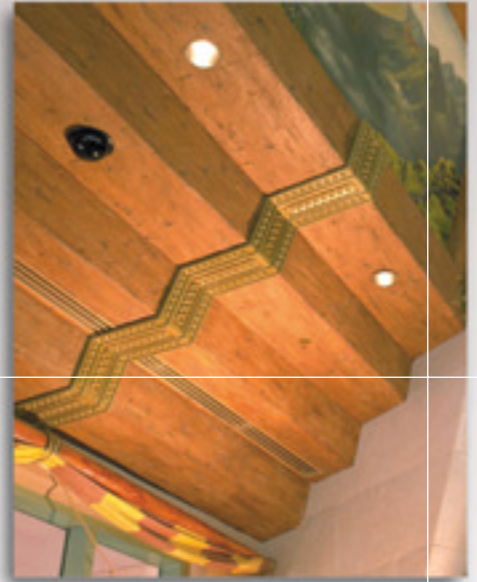
Natural G.R.G.
Stained

SHAFT
'BAMBOO' texture.



Stained
Natural G.R.G.

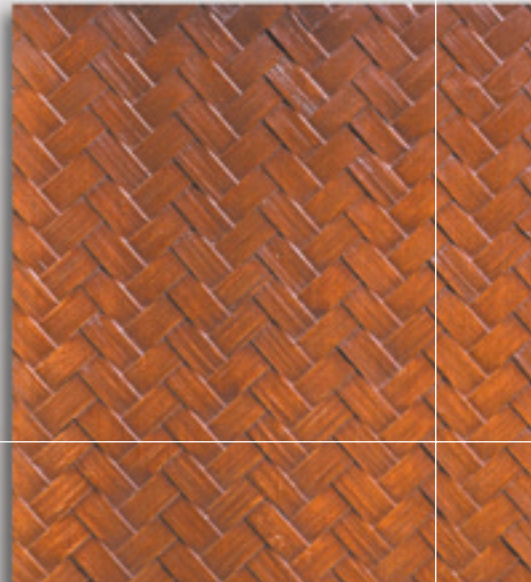
3 1/2" / 90



ATLANTIS, BAHAMAS
G.R.G. 'Simulated Barnwood' stepped beams with decorative MetalCast® joint covers.

WEAVE #7
Stained G.R.G.

2" / 51



These finishes show the possibilities but stains are field applied. G.R.G. is for interior use only.

G.R.G.

4"
102

3"
76



MOULDING
'OAK GRAIN' texture with 'WALNUT' stain.

Stained
↑
↓
Nat. G.R.G.



G.R.G. BEAM
'HAND HEWN' texture.

G.R.G. 'Simulated Wood' can be more expensive than real wood and is only used when:
* Fire restrictions prohibit wood.
** Complex shapes are not economical in wood.

3"
76

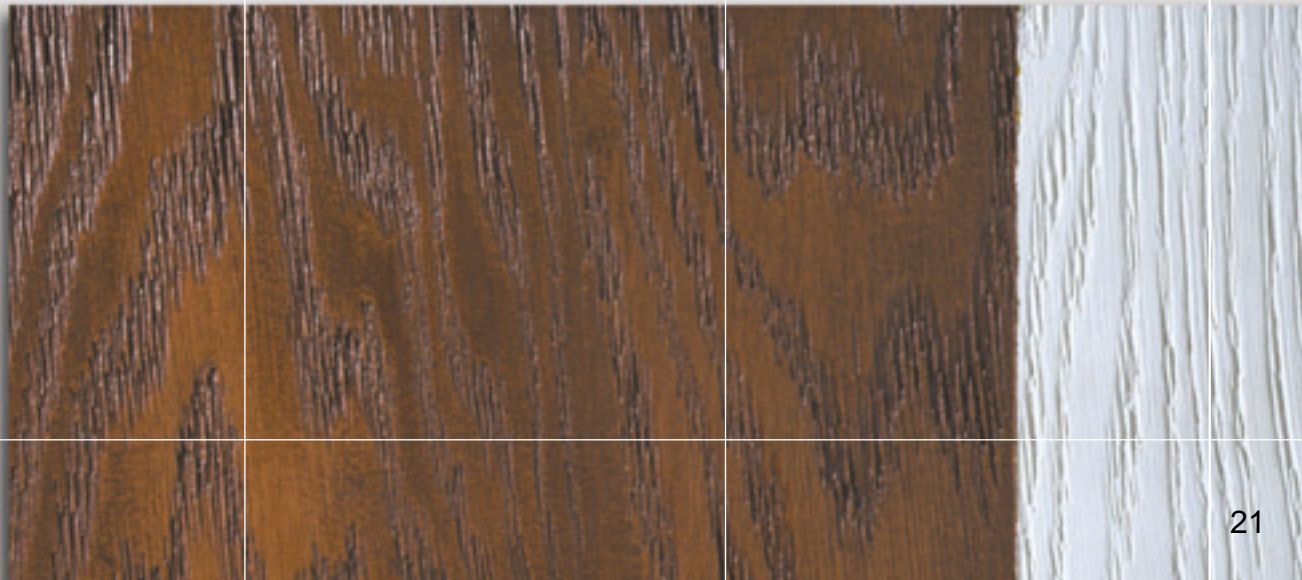


MOULDING
'MAHOGANY GRAIN' texture and stain.

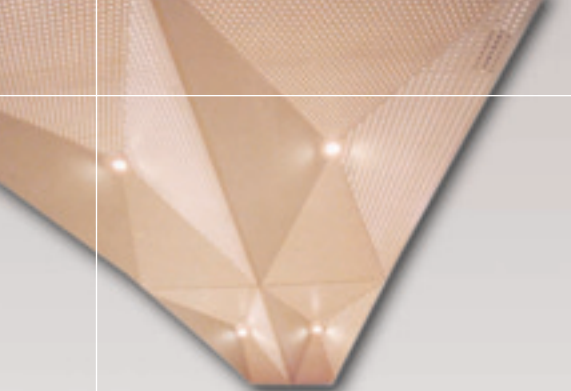
PANEL
'OAK GRAIN' texture with 'FRUITWOOD' stain.

1"
25

Stained ← → Natural G.R.G.



G.R.G.

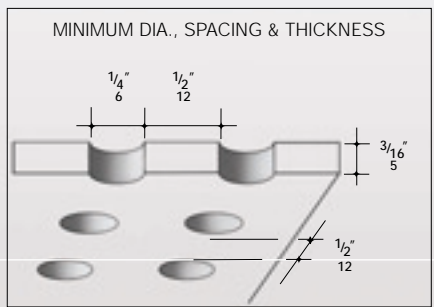


TOYO UNIVERSITY, TOKYO.
Partially perforated pyramid panels.

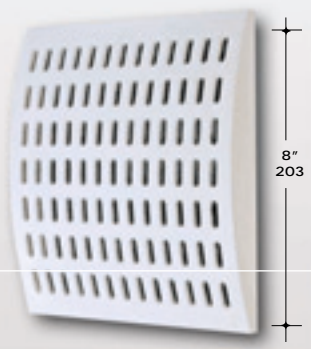


PEPSICO, PURCHASE, N.Y.
G.R.G. - 'U' shaped beams with in-fill 'PERFORATED PANELS'.

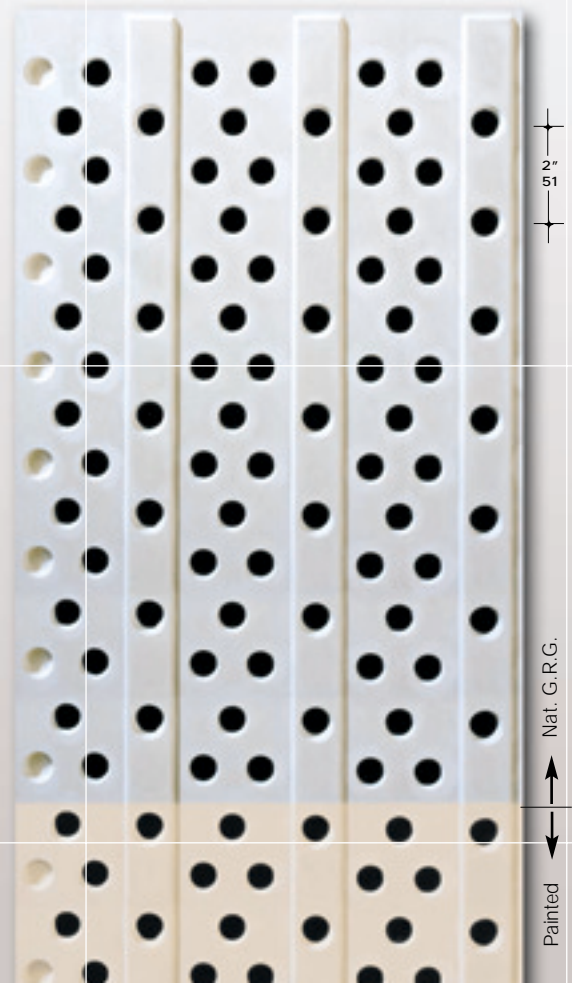
PEPSICO, PURCHASE, N.Y. Design: Gwathmey - Siegel & Assoc.
Double curved perforated elements, with taped joints to achieve a continuous look.



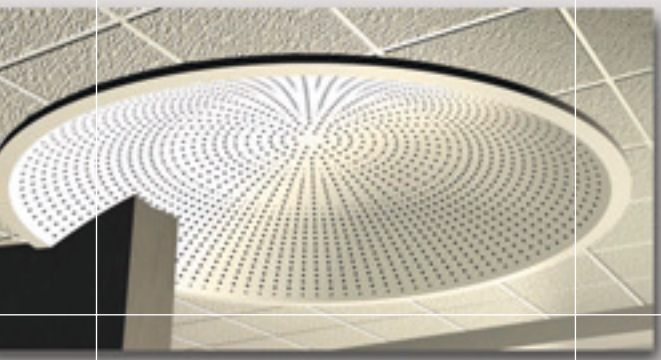
CURVED PERFORATED PANEL



RIBBED PERFORATED PANEL



PERFORATED DOME SIMULATION

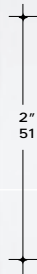


G.R.G.

Field painted .



CLOSED SCREEN



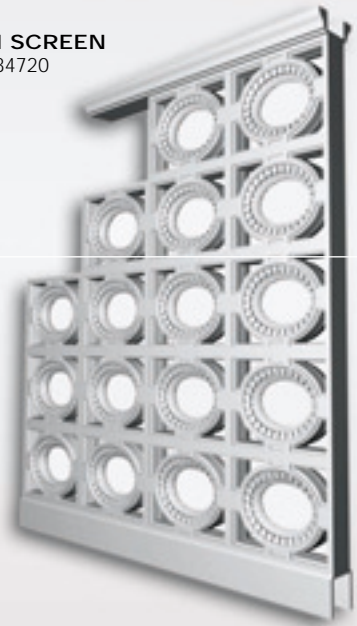
2"
51

CURVED OPEN SCREEN with 2" (51mm) openings.



KING OF THE RED - Design: Bauer Interiors.
Open filigree panels suspended under a black painted dome.

OPEN SCREEN Type #84720



OPEN SCREEN



4"
102

These finishes show the possibilities
but paints are field applied.
G.R.G. is for interior use only.

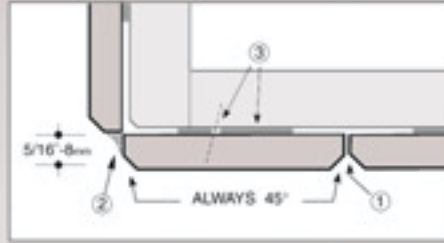


'VENEER' PANELS are 5/16" (8 mm) thick. They do not have perimeter reinforcement and can be field cut, but there are size restrictions. See below:

'VENEER' PANELS



QuarryCast®- 'VENEER' PANELS

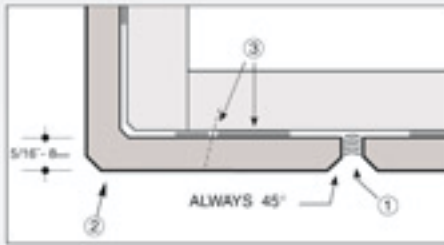


MAX. SIZE	: 48" X 36" (1220 X 900)
① JOINTS	: DRY BUTT JOINTS - NEVER GROUT
② CORNERS	: FIELD MADE AND CAULKED
③ FASTENING	: ADHESIVE & AIR GUN NAILS (BARELY VISIBLE)
MOULDING	
MAX. LENGTH	: 48" (1220)
JOINTS	: GROUT (OR CAULK)
FASTENING	: ADHESIVE & SCREWS (GROUT FILLED- BARELY VISIBLE)

'CUSTOM' PANELS



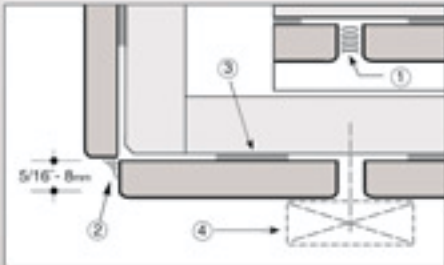
QuarryCast®- 'VENEER' PANELS



MAX. SIZE	: 48" X 36" (1220 X 900)
① JOINTS	: CAULK - NEVER GROUT
② CORNERS	: FACTORY CORNER MAX. 6" (152) LEGS
③ FASTENING	: ADHESIVE & AIR GUN NAILS (BARELY VISIBLE)
MOULDING	
MAX. LENGTH	: 48" (1220)
JOINTS	: CAULK (OR GROUT)
FASTENING	: ADHESIVE & SCREWS (GROUT FILLED- BARELY VISIBLE)



MetalCast®- 'VENEER' PANELS



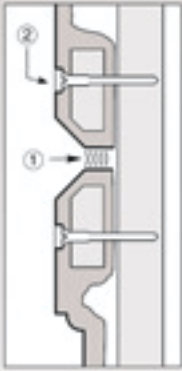
MAX. SIZE	: 36" X 24" (900 X 600)
① JOINTS	: CAULK - NEVER GROUT
② CORNERS	: CAULK
③ FASTENING	: ADHESIVE (④) - TEMPORARY BLOCKS- AVOIDS VISIBLE FILLED SCREWHOLES)
MOULDING	
MAX. LENGTH	: 48" (1220)
JOINTS	: CAULK - NEVER GROUT
FASTENING	: ADHESIVE & SCREWS (GROUT FILLED- ALWAYS VISIBLE)



With built-in reinforcement, CUSTOM PANELS can be larger than 'VENEER' PANELS, but are not recommended if field cutting is required.

G.R.G. - CUSTOM PANELS
FIELD PAINTED

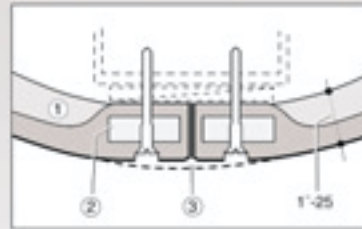
- | | |
|-------------|--|
| MAX. SIZE | : AS LARGE AS PRACTICAL |
| ① JOINTS | : CAULK |
| ② FASTENING | : SCREWS (COMPOUND FILLED- NOT VISIBLE AFTER PAINTING) |



G.R.G.

- | |
|----------------------------|
| 1. END FLANGES |
| 2. BUILT- IN PLYWOOD |
| 3. TAPE JOINT LIKE DRYWALL |

MAX. SIZE ONE PIECE- AS PRACTICAL

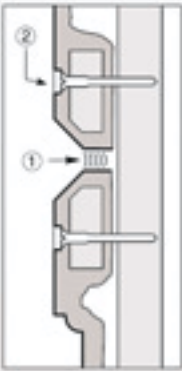


COLUMNS



QuarryCast® - CUSTOM PANELS

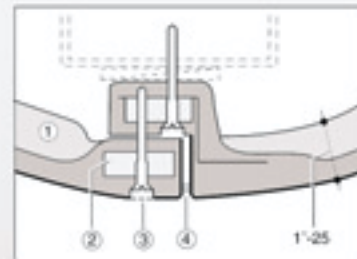
- | | |
|-------------|---|
| MAX. SIZE | : 32 SQ. FT. (3 SQ. M.) |
| ① JOINTS | : CAULK - NEVER GROUT. |
| ② FASTENING | : SCREWS (GROUT FILLED- BARELY VISIBLE) |



QuarryCast®

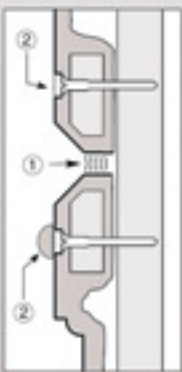
- | |
|--|
| 1. END FLANGES |
| 2. BUILT- IN PLYWOOD |
| 3. GROUT FILLED SCREWHOLE WILL BE BARELY VISIBLE |
| 4. CAULK OR GROUT JOINT |

MAX. SIZE ONE PIECE- 32 SQ. FT. (3.0 SQ. M.).



MetalCast® - CUSTOM PANELS

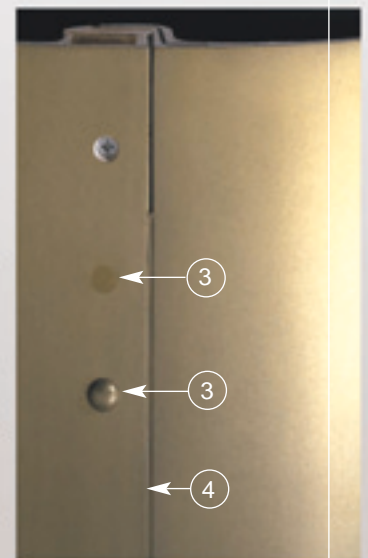
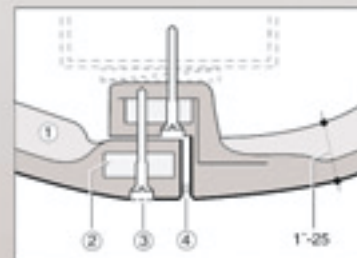
- | | |
|-------------|--|
| MAX. SIZE | : 20 SQ. FT. (1.8 SQ. M.) |
| ① JOINTS | : CAULK NEVER GROUT |
| ② FASTENING | : SCREWS (ALWAYS VISIBLE WHEN GROUT FILLED, OR COVERED WITH BUTTONS) |

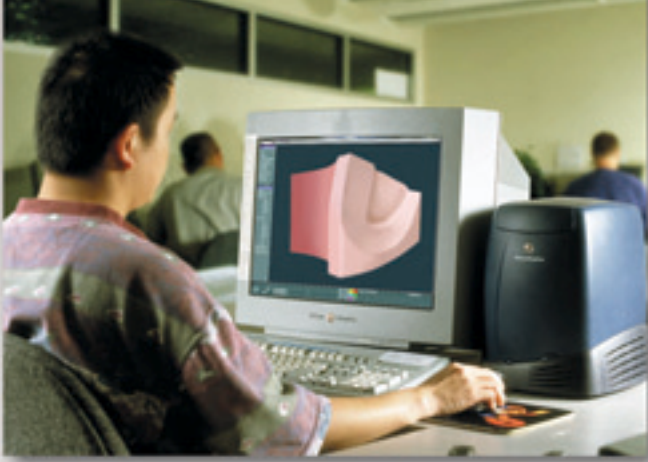


MetalCast®

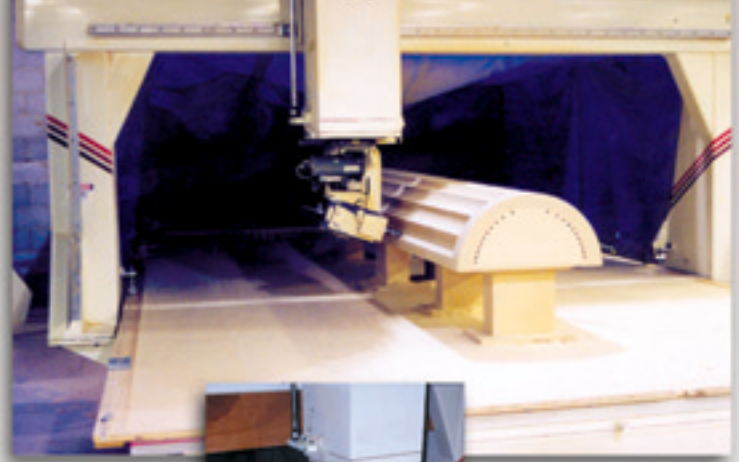
- | |
|---|
| 1. END FLANGES |
| 2. BUILT- IN PLYWOOD |
| 3. GROUT FILLED SCREWHOLE (ALWAYS VISIBLE), OR MetalCast® BUTTONS |
| 4. CAULK (NEVER GROUT) JOINT |

MAX. SIZE ONE PIECE- 20 SQ. FT. (1.8 SQ. M.)





①



②



③



④

G.R.G. MANUFACTURING PROCESS

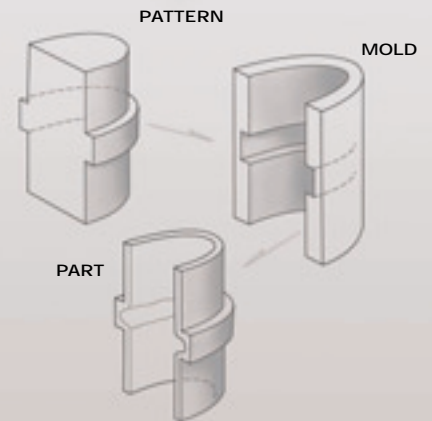
- ① Formglas C.A.D. generated shop drawings, (showing parts and installation methods) are submitted for approval.
- ② After approval, advanced C.A.M. equipment cuts patterns that look identical to the final parts.
- ③ 'Mirror Image' molds (shown in red) are fabricated from the patterns.

White, high strength 'alpha' gypsum and glassfiber mat is then hand applied to the molds. Metal or plywood strip reinforcement is incorporated at the same time.

- ④ Once the gypsum has set, the strong 1/8" - 3/16" (3-5mm) thick parts are removed from the molds, then quality inspected and stored.

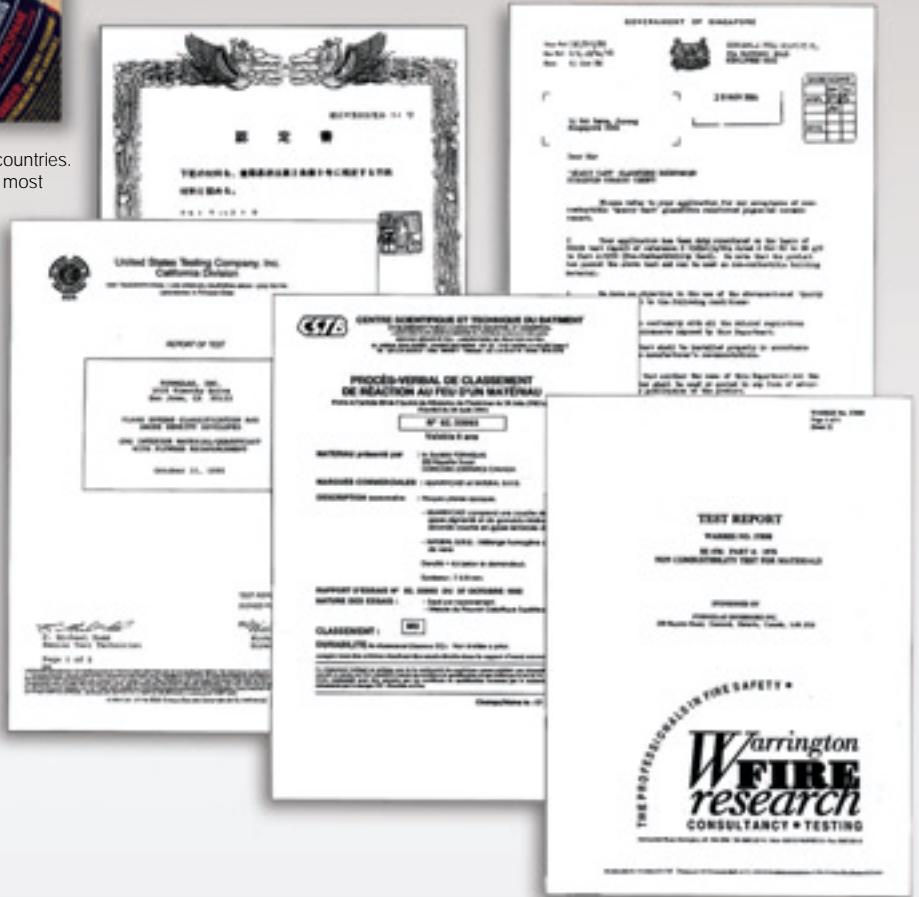
- QuarryCast® and MetalCast® are, in principle, made the same way as G.R.G. but with the cast-in finishes they are factory sanded, sealed and lacquered.

Note: G.R.G. parts are thin but rigid and cannot be bent. Every curved or radiused element requires it's own pattern/mold.

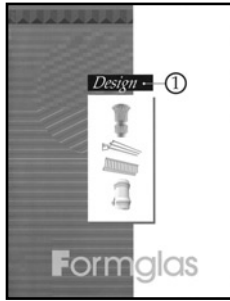




Formglas materials have been tested and approved in most countries. With very low or zero flame / smoke ratings, they exceed the most stringent codes.



FORMGLAS LITERATURE



DESIGN ①



QuarryCast®



MetalCast®



G.R.G.

Formglas Inc.

20 Toro Road, Toronto, ON CANADA M3J 2A7
Tel: (416) 635-8030 Fax: (416) 635-6588
Web Site: [http:// www.formglas.com](http://www.formglas.com)

Formglas (SEA) Sdn Bhd.

Lot 590, Persiaran Raja Lumu Pandamaran Ind. Area,
42000 Port Klang, Selangor Darul Ehsan. Malaysia
Tel: (603) 368-1299 Fax: (603) 367-7795

Formglas Japan Inc.

1-10-4 Shinjuku Shinjuku-Ku, Tokyo 160, JAPAN
Tel: (03) 3225-8397 Fax: (03) 3225-9153