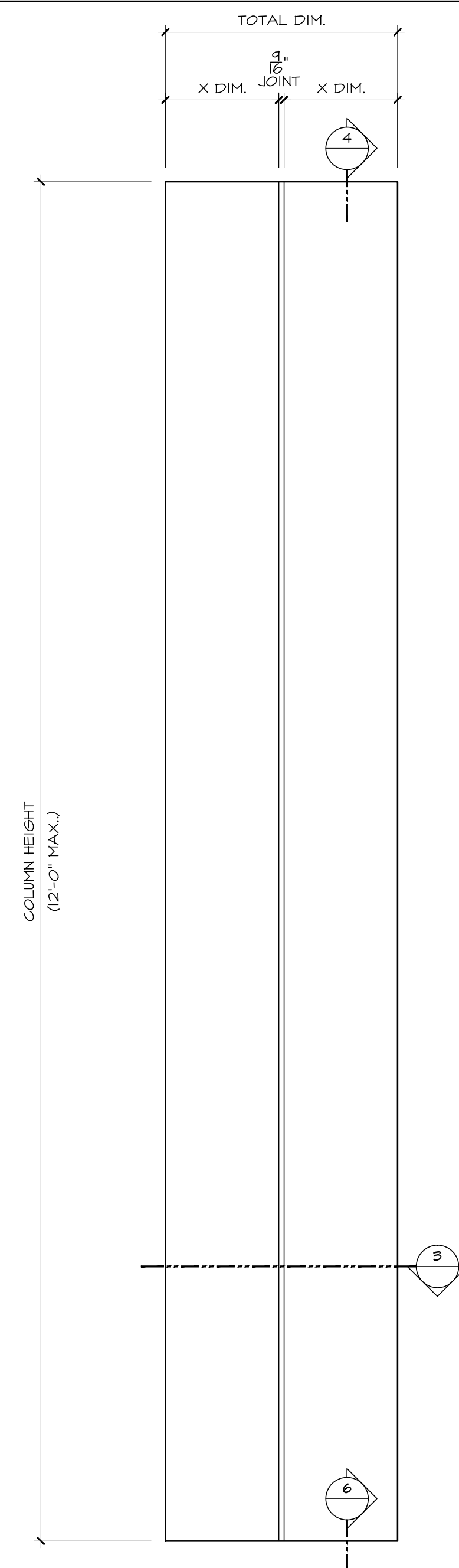
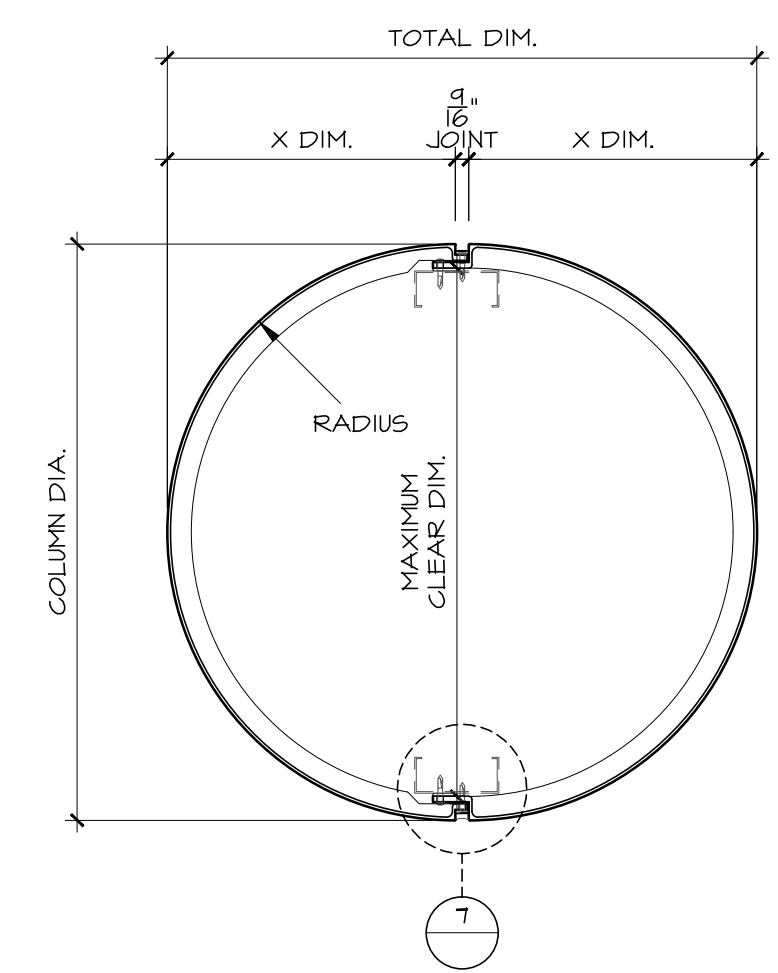


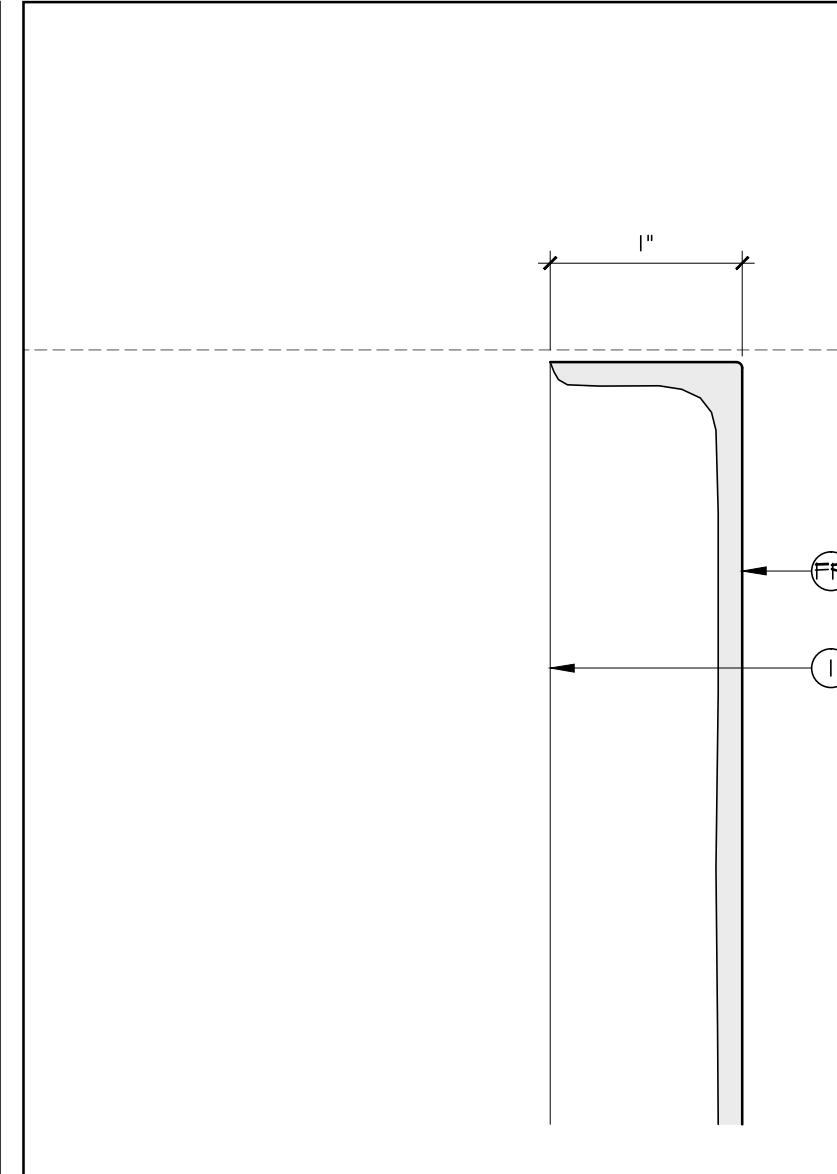
**1 COLUMN ELEVATION**  
SCALE: 1"=1'-0"  
REF:



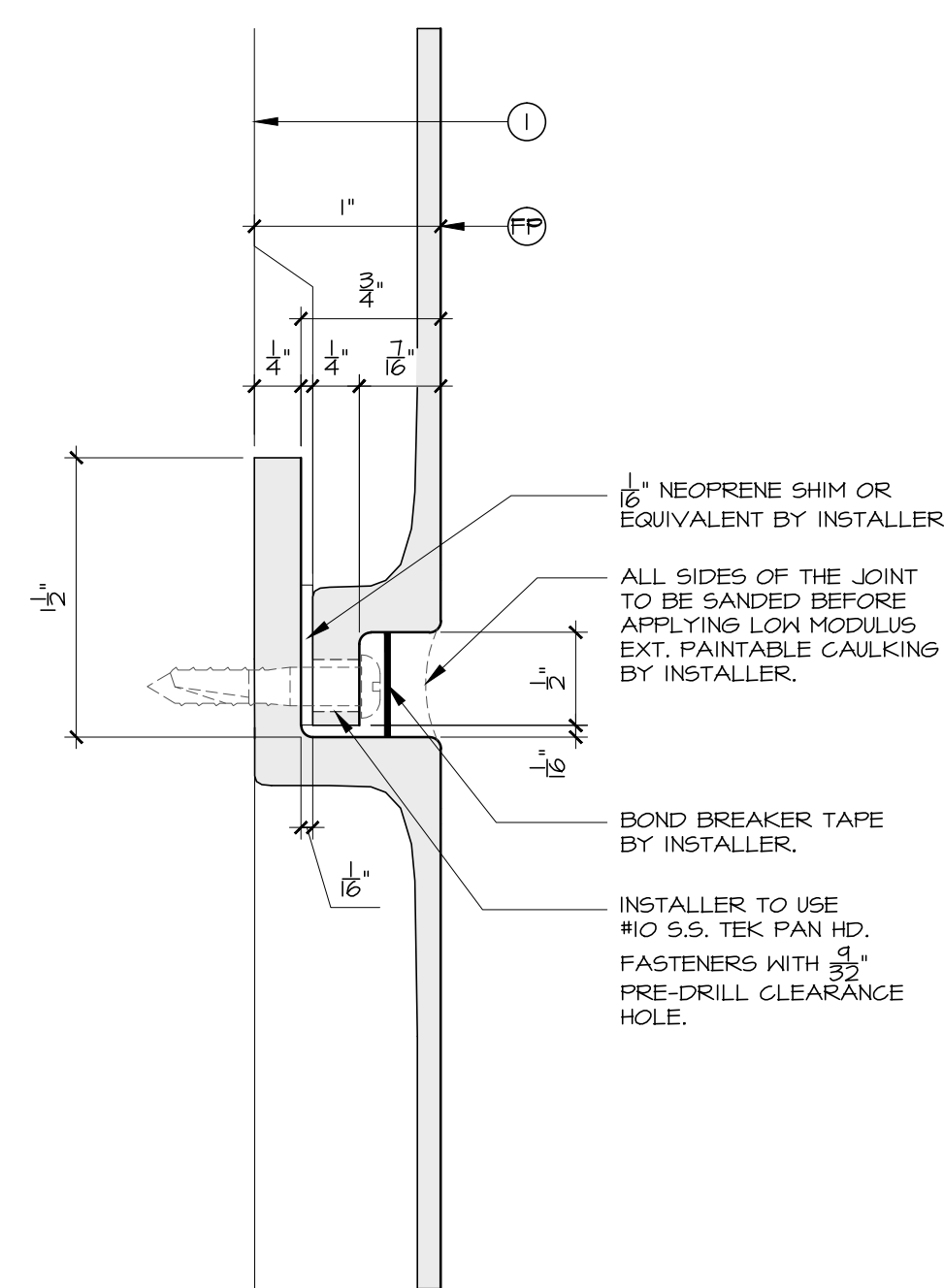
**2 COLUMN ELEVATION**  
SCALE: 1"=1'-0"  
REF:



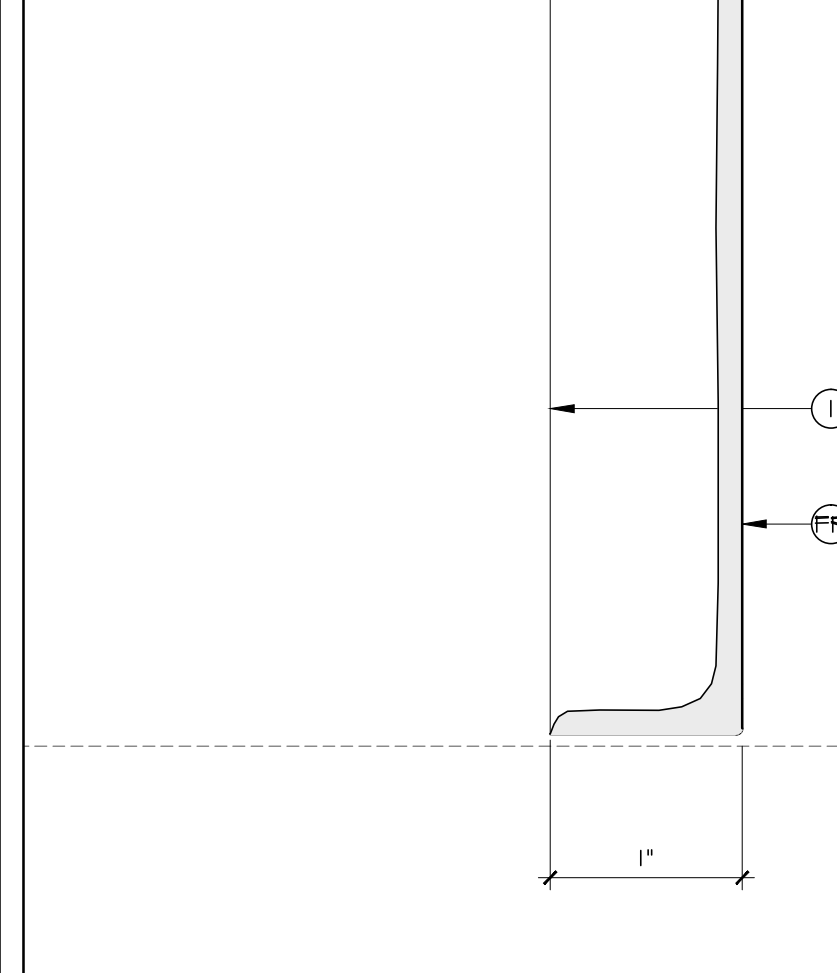
**3 COLUMN PLAN SECTION**  
SCALE: 1/2"=1'-0"  
REF:



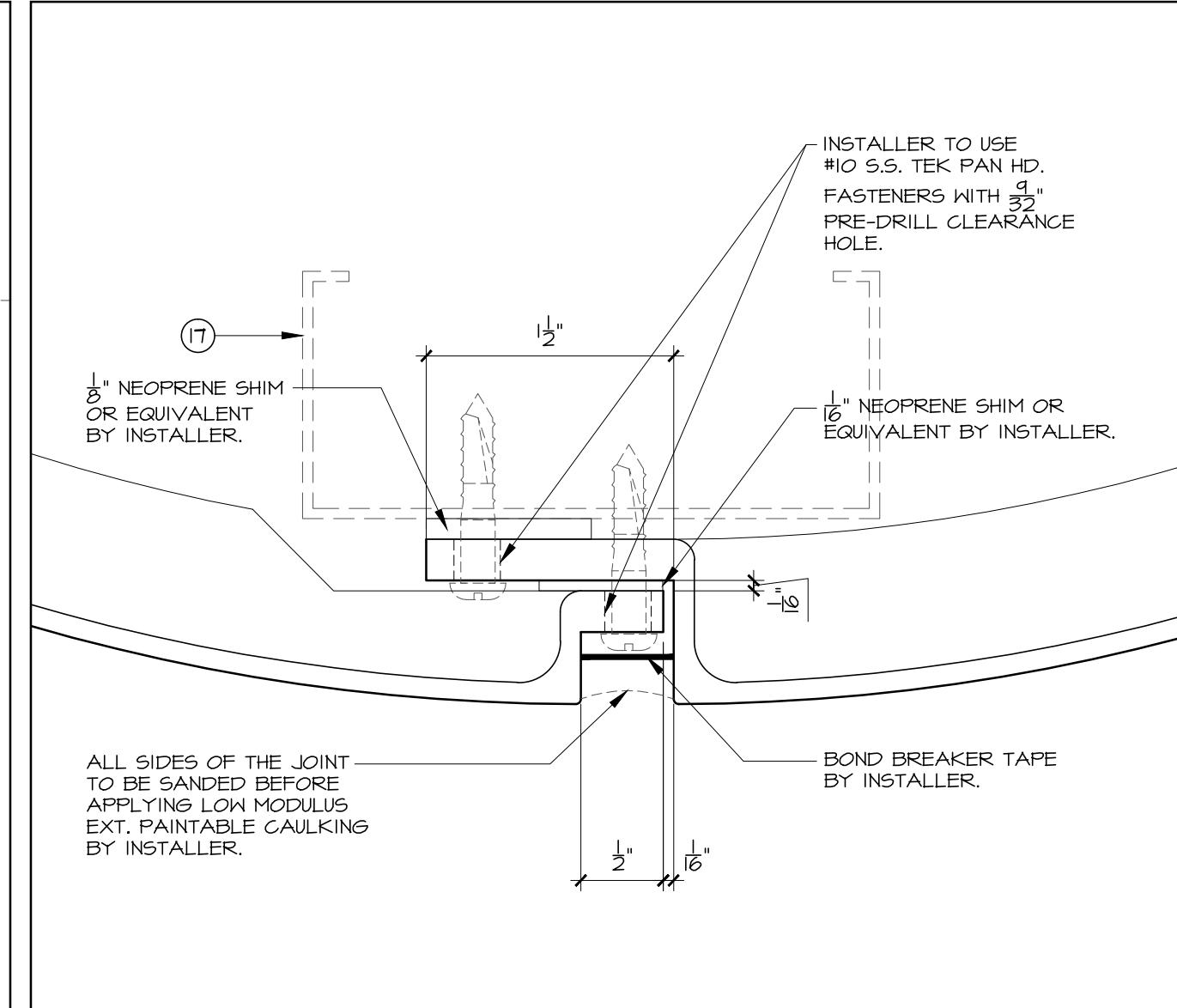
**4 DETAIL AT COLUMN TOP**  
SCALE: FULL  
REF:



**5 HORIZONTAL STACK JOINT**  
SCALE: FULL  
REF:



**6 DETAIL AT COLUMN BOTTOM**  
SCALE: FULL  
REF:



**7 OVERLAP JOINT DETAIL**  
SCALE: FULL  
REF:

**STANDARD LEGEND**

<b>F.R.P (FP)</b>			
(FP) F.R.P [FIBER REINFORCED PLASTIC - TO BE FIELD FINISHED]			
1 N/A		16 SUB-FRAME SYSTEM	
2 TAPE REVEAL [FIELD TAPED - IF SPECIFIED]		17 FRAMING, BLOCKING, ETC.	
3 JOINT [V]		18 POLYURETHANE SHIMS	
4 DRAFT		19 STAINLESS STEEL SCREWS [FILLED AS REQ'D]	
5 N/A		20 CAULKED JOINT	
6 N/A		21 ADHESIVE	
7 RECYCLED PLASTIC REINF. [CONT.'S]		22 "ZOOPOXY" FILLER OR EQUAL	
8 STEEL "L" OR "Z" [NOT CONT.'S]		23	
9 BUILT-IN "FIBERGLASS STIFFENERS" REINF. [600MM ON CENTER]		24	
10 N/A			
11 BUILT-IN LOOP [HANGER]			
12 BUILT-IN FIBERGLASS GUSSET			
13 BEVEL EDGES / CORNERS			
14 FALSE JOINT			
15 N/A			
<b>MISCELLANEOUS</b>		<b>CERTIFICATION</b>	
(XX) NUMBER DENOTES RECOMMENDED INSTALLATION SEQUENCE		FORMGLAS IS REGISTERED AS AN ISO 9001-2000 COMPANY	
* ASTERISK DENOTES SITE CUT PART			
ALL BUILT-IN STEEL IS GALVANIZED			

**F.R.P (FP) NOTES**

- ALWAYS FIELD FINISHED
- INSTALLATION**
    - FASTENING, SUSPENSION AND BRACING METHODS INDICATED ARE TO BE CONSIDERED A GUIDE ONLY. THE INSTALLATION CONTRACTOR SHALL ABIDE BY LOCAL CODES, VERIFY JOB CONDITIONS AND ADJUST INSTALLATION PROCEDURES ACCORDINGLY.
    - SOME SITE CUTTING AND/OR GRINDING OF PARTS MAY BE REQUIRED.
  - COUNTERSUNK SCREW HOLES**
    - HOLES SHOULD BE PATCHED WITH "ZOOPOXY" OR EQUAL TYPE FILLER.
    - ALWAYS USE STAINLESS STEEL SCREWS WHEN FASTENING.
  - JOINTS**
    - JOINTS SHOULD BE CAULKED TO ALLOW FOR MOVEMENT.
    - NEVER TAPE THE JOINTS BETWEEN UNITS UNLESS SPECIFIED.
  - FINISHING & PAINTING**
    - SURFACE IMPERFECTIONS WILL OCCUR AT TIMES. SAND OR PATCH WITH AUTO BODY FILLER OR "ZOOPOXY" TYPE FILLER. USE ONLY ACRYLIC LATEX BASED FINISHES APPROVED FOR EXTERIOR USE.
    - GLOSS PAINT IS NOT RECOMMENDED.
  - DRAFT ANGLES AND RADIUS**
    - DRAFT ANGLES ARE REQUIRED FOR MOLD RELEASE. UNLESS SPECIFICALLY NOTED, REVEALS, SETBACKS OR RETURNS WILL BE DRAFTED BETWEEN 5° AND 10°, ON AVERAGE FOR EVERY 10MM OF HEIGHT 1MM OF DRAFT IS REQUIRED.
    - ALL CORNERS WILL HAVE A SLIGHT CHAMFER OR RADIUS UNLESS SPECIFICALLY NOTED.
  - TOLERANCES**

SHELL THICKNESS	±1/8" (3.2MM)
DIMENSIONAL IN ALL DIRECTIONS	(MIN.) ±1/16" (3.2MM)
WARPAGE OR BOWING	±1/8" PER MT (2MM PER MT)
FIELD SHRINKING MAY BE REQUIRED	
  - ITEMS EXCLUDED**
    - UNLESS SPECIFICALLY NOTED, CAULKING, HARDWARE, CLIPS, FASTENERS, ADHESIVE, BONDO, etc. ARE TO BE SUPPLIED BY OTHERS.
  - SEE FORMGLAS SPECIFICATIONS** FOR ADDITIONAL INFORMATION
  - MOLDS**
    - ALL "CUSTOM MOLDS" WILL BE DESTROYED ONE MONTH AFTER DELIVERY OF MATERIALS. CONTRACTOR/ OWNER MAY NEGOTIATE TO RETAIN MOLDS.
  - NOTE**
    - DRAWING APPROVAL CONSTITUTES REVIEW OF CONTENT, STANDARD LEGEND, GENERAL NOTES, COLORS, FINISHES/PATTERN AND DIMENSIONAL VERIFICATION.
    - FORMGLAS PRODUCTS LTD. WILL PROCEED WITH MANUFACTURING UPON RECEIPT OF WRITTEN APPROVAL OF SHOP DRAWINGS.

**FRP COLOUR SELECTION TO BE VERIFIED**

ISSUED FOR APPROVAL

REVISIONS DATE

**Formglas**  
Products Ltd.  
2 CHAMPAGNE DRIVE, TORONTO, ONT. M3J-2C5 CANADA  
TEL: (416) 635-8030 FAX: (416) 635-6588  
338 FOURTEEN ST, SUITE 150 AMBRIDGE, PA 15003 USA  
TEL: (724) 266-1220 FAX: (724) 266-7174  
AVE. RUBILINA 88, PARQUE INDUSTRIAL PALACO, MEXICALI, B.C.  
TEL: (686) 582-7609 FAX: (686) 582-7615  
E-MAIL: ENG@FORMGLAS.COM

**FRP COLUMN W/CAULK JOINT ELEVATIONS/PLAN/DETAILS**

DATE: SCALE: AS SHOWN  
DRAWN: CHECKED:  
DRWG: